



Phone (209) 400-7200 Fax (209) 943-7923 www.wildhorses4x4.com

Racket Jacket Wheel Well Kit

#3481 Date 11/09/05 rev. 0

Kit Contents:

- 6 - Sound dampener pads
- 8- Heat absorber/barrier panels
- 1- Spray Adhesive
- 1- Roll aluminum foil tape

Tools Needed for Installation:

- * Sharp knife or scissors
- * Wallpaper seam roller

Installation of any Racket Jacket product begins with preparation of the interior metal surfaces. All panels must be thoroughly cleaned, washed and painted (recommended). Over time, adhesive material will not stick to dusty, dirty, grimy body panel surfaces. They must be bone dry and be sure that the temperature of metal surface is above 70 degrees.

1. Applying the Damper Pads

Lay out the sound damper pads and strips according to photo 1. Tack the pad in place. Using the wallpaper seam roller, “pressure roll” the damper pads to the metal skin of the wheel well, removing all air gaps so that the adhesive backing firmly grips the metal. Work the roller across the damper material from the center toward the edge.

2. Applying the Heat Absorber/Barrier

Photo 2 shows the approximate size and shape of the pre-trimmed, ready-to-install Heat Absorber/Barrier panels and the location they will be installed in the wheel well. Lay the panels into the wheel well, aluminum side facing up, smoothing the material out as you go. Make sure that the edges go against each other. Some trimming of the edges with the scissors may be required. Using the marking pen, trace the edges of the panels on the wheel well for guide lines when you begin the gluing process. Spray glue the fibrous side of an absorber panel and set it aside. Spray glue the corresponding section of the wheel well to which this panel will be applied. Wait until the surfaces become tacky. This is the key to permanent adhesion. When the glued surface is “tacky”, it is ready to be installed.

Following the guide lines you marked on the wheel well, place the absorber panel into position, and “lightly” tack it in place. When you are satisfied with the way the panel lays in place, permanently adhere it to the wheel well by applying hand pressure to the material, smoothing it as you go. Complete the installation process for all of the absorber panels.

The final step is to apply the aluminum tape to all seams and edges of the material. Measure out a length of tape and peel back a few inches of the protective film, exposing the self-adhesive backing. Overlap the seams and edges evenly and apply hand pressure along the entire length of the tape to seal it against the heat absorber/barrier material and the wheel well. Install the aluminum tape to cover and seal all seams and edges of the separate panels. Also tape around the perimeter edges of the wheel well absorber.

Photo 1

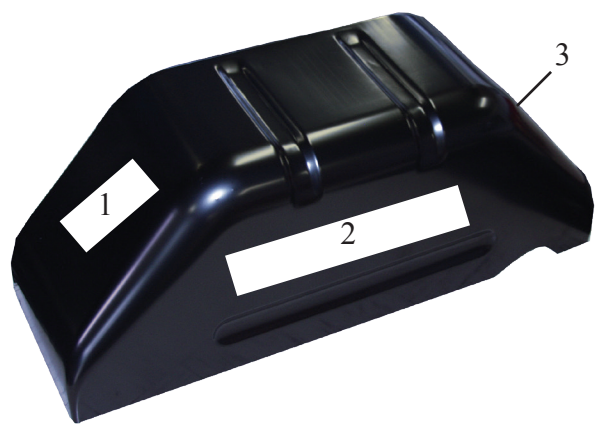
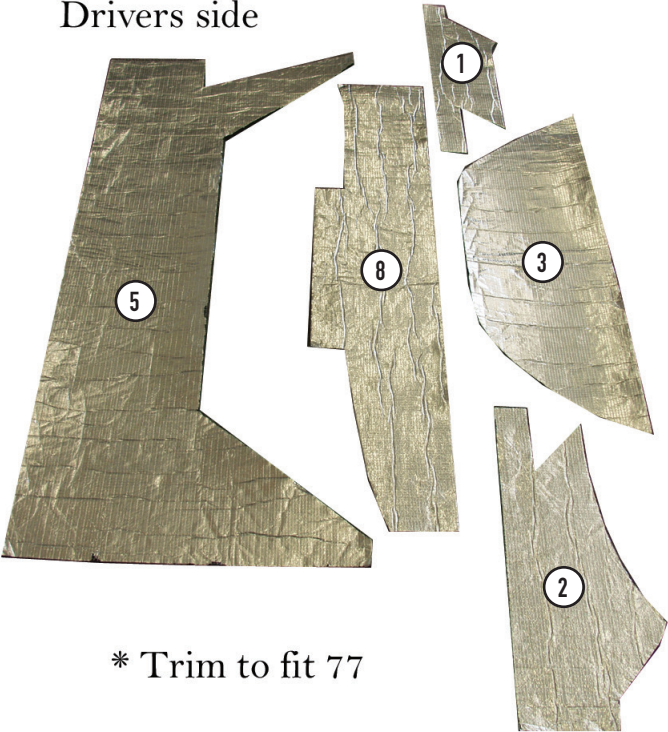


Photo 2

Drivers side



* Trim to fit 77

Passenger side

